

EFORT	
埃夫特智能机器人股份有限公司 EFORT Intelligent Robot Co., Ltd.	
比例 Scale	1:1
页码 Page	1/2
运动范围图 Robot Workspace	
修订记录 Revision Record	ER35-1800

End flange mounting size

末端法兰安装尺寸

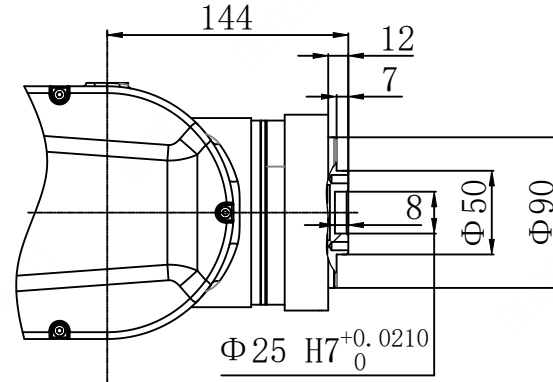
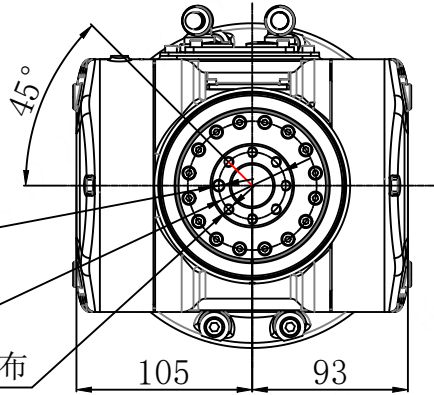
$\Phi 6 \text{ H7}^{+0.0120}_0$ 深10

Depth 10

$\Phi 40 \pm 0.1$

7-M6 深7 均布

Depth 7 EQS



Base mounting size

底座安装尺寸

4-M12

吊装螺纹孔
(Lifting threaded holes)

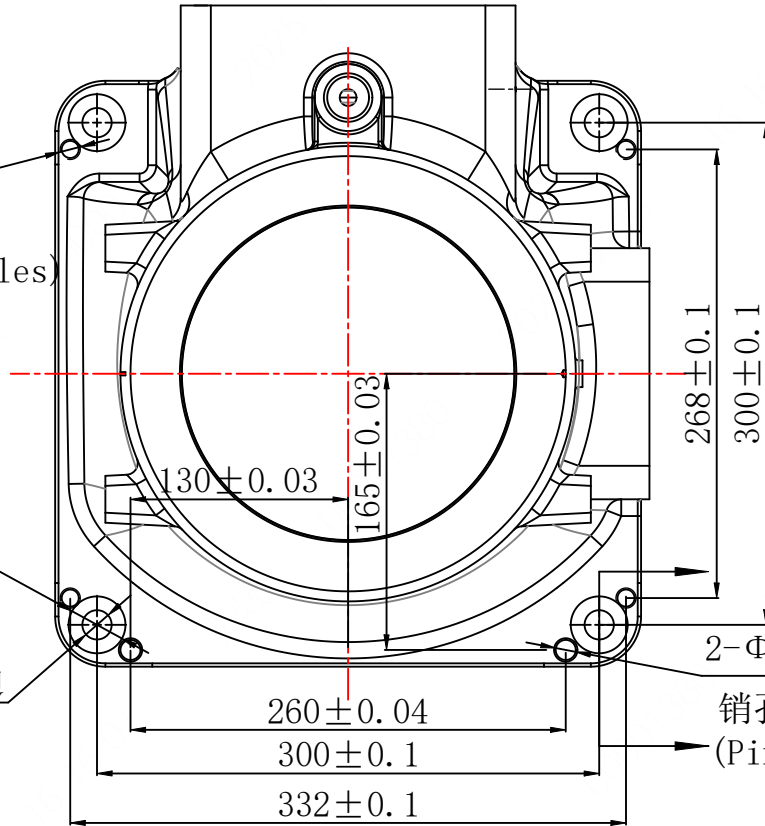
$\Phi 34$ 深2

Depth 2

沉头孔
(Counter-bore hole)

4- $\Phi 17.5$ 通

Throughout



268 ± 0.1
 300 ± 0.1

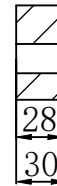
260 ± 0.04

300 ± 0.1

332 ± 0.1

2- $\Phi 12 \text{ H7}^{+0.0150}_0$ 通

销孔 Throughout
(Pins hole)



EFORT	
埃夫特智能机器人股份有限公司 EFORT Intelligent Robot Co., Ltd.	
比例 Scale	1:1
页码 Page	2/2
主要安装尺寸图 Main Dimensions	
修订记录 Revision Record	ER35-1800